



Curing cancer has a name

**GUSTAVE /
ROUSSY**
PARIS CANCER CAMPUS

FOREWORD



“Cancer is the greatest challenge of our century, affecting every one of us. Since the 1990s, the number of new cases has doubled. Fortunately, thanks to the efforts of the world’s largest cancer centres and the support of committed donors, the cure rate has increased from 50% to 66%. Over the past thirty years, we have made more progress than in the previous century. We must now step up our efforts to combat this disease, which is affecting more and more people. Today, we firmly believe that we will be able to cure 80% of cancers by 2040. With the support of the French and European authorities and our partners, I will devote all my energy to this cause, driven by the fantastic teams at Gustave Roussy. However, the resources required are considerable. Your commitment will be key to overcoming this intergenerational challenge. This requires exceptional philanthropic support, and I need your help to secure it. “Together, we can do it, and it is thanks to you that we will succeed!”

Prof. Fabrice Barlesi

Managing Director, Gustave Roussy

CHOOSE THE LEADING INSTITUTION

in France and Europe in the fight against cancer

Founded on the initiative of Professor Gustave Roussy, father of the concept of multidisciplinary cancer care, Gustave Roussy is the leading cancer centre in France and Europe. **A private, non-profit organisation, in 2026 it ranked sixth in the world in Newsweek's list of the best hospitals specialising in oncology, and is also listed among the most prestigious institutions by Le Point magazine.**

Le Point

As a reference centre for the treatment of cancer in both adults and children, Gustave Roussy embodies medical, scientific and academic excellence. The institution has opted for an integrated model, combining clinical care, research and education, in order to provide personalised medicine tailored to the specific needs of each patient.

Located in Villejuif, Gustave Roussy is now at the heart of the Paris-Saclay Cancer Cluster, a true European driver of innovation in oncology. This exceptional site brings together three complementary entities: a healthcare campus encompassing all medical disciplines, a rapidly expanding research campus with the construction of a new 33,000 m² research centre designed to double the size of the research teams by 2028, and an industrial campus dedicated to start-ups and biotech companies, with 100,000 m² of space devoted to innovation.

In just a few years, Gustave Roussy has succeeded in building a unique ecosystem, bringing together world-renowned researchers, clinicians, major industry players and investors. This constellation-based structure, designed to foster synergies between basic research, industrial innovation and high-tech healthcare, embodies a new way of thinking about and shaping the medicine of the future.



Prof. Gustave Roussy seen by Yan Pei-Ming

OUR LEGITIMACY

100 years of innovation and success

OUR STATUS

An integrated, multidisciplinary model, regarded as the most advanced in France and Europe

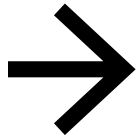
OUR MISSION STATEMENT

Excellence in research and care "made in France"

OUR AMBITION

Cure 80% of cancers by 2040

The strength of a collective and its five activities



Gustave Roussy comprises five distinct yet interconnected entities, each playing a key role in the group's strength.



GUSTAVE ROUSSY - MEDICAL

The main entity forms the operational heart of the institution, with the aim of providing patients with multidisciplinary, innovative and personalised care, whilst developing cutting-edge clinical trials supported by philanthropic commitment.



GUSTAVE ROUSSY - FOUNDATION

The Gustave Roussy Foundation supports the development of translational research, in close collaboration with scientific and medical teams. Thanks to the generosity of its donors, it establishes chairs of excellence to attract new talent, supports ambitious research and innovation programmes, and helps to equip technological platforms with state-of-the-art facilities.



GUSTAVE ROUSSY - EDUCATION

In partnership with Paris-Saclay University, Gustave Roussy Education oversees initial and continuing training in the fields of healthcare and science. Gustave Roussy Éducation trains several thousand students, interns, researchers and healthcare professionals every year, thus contributing to the dissemination of knowledge and the evolution of practices in oncology.



GUSTAVE ROUSSY - TRANSFER

Dedicated to advancing research and promoting innovation, it facilitates the translation of scientific discoveries into practical applications that benefit patients, through industrial partnerships, the creation of start-ups and accelerator programmes.



GUSTAVE ROUSSY - INTERNATIONAL

The international organisation promotes Gustave Roussy's expertise worldwide. It develops partnerships with leading institutions, coordinates the largest alumni network in Europe (2,000 members from 25 different countries) and plays an active role in collaborative projects around the world.

Our key figures in 2025

4,000

EMPLOYEES (INCLUDING
1,400 DEDICATED TO
RESEARCH)

**€600
MILLION**
OVERALL BUDGET

139,000

REGISTERED STAYS
(FULL HOSPITALISATION,
DAY HOSPITALISATION,
CHEMOTHERAPY AND
RADIOTHERAPY SESSIONS)

600 BEDS AND PLACES

(BETWEEN THE VILLEJUIF AND
CHEVILLY-LARUE SITES)

354,000 MEDICAL CONSULTATIONS

(INCLUDING 17,000 IN PAEDIATRICS)

54,280

PATIENTS FOLLOWED
(INCLUDING 2,759
IN PAEDIATRICS)

27,077

NEW PATIENTS
(INCLUDING 587
IN PAEDIATRICS)



A COMPREHENSIVE, INTEGRATED and innovative response

Gustave Roussy is implementing a comprehensive strategy that covers the entire care pathway and is underpinned by major innovations, with the aim of providing every patient living with cancer with optimal care tailored to their specific needs.



1. Strengthening prevention is a key priority, driven in particular by the Interception programme. This innovative scheme, launched in 2021, aims to detect cancer at an early stage and in a targeted manner among people at increased risk, drawing on a detailed understanding of biological mechanisms and risk factors. The programme, which works in partnership with GPs, is currently being rolled out across 17 centres in France. Further openings are in progress.



2. Faster diagnosis is a crucial challenge in improving the chances of healing. To this end, Gustave Roussy has set up the InstaDiag pathways, rapid and personalised diagnostic channels, organised according to the types of cancer concerned: breast, thyroid, liver, pancreas, gynaecological cancers, lung, sarcomas, skin and very soon ENT. These pathways help to avoid long waiting times and unnecessary medical delays by facilitating access to tests and specialist consultations as soon as the first symptoms appear.



3. Customising treatments

is central to the treatment strategy. To this end, Gustave Roussy uses cutting-edge tools, such as FRESH liquid biopsy, which allows the tumour's progression to be monitored in real time via a simple blood test, and the IHU Prism, which combines molecular analysis and computer modelling to tailor treatments as effectively as possible. Furthermore, innovative projects incorporating artificial intelligence, such as MosAlc and PortrAlt, are paving the way for an even more precise and responsive form of precision medicine.

4. Innovation in therapy

remains a constant ambition. Gustave Roussy is developing advanced therapeutic approaches, particularly in the field of radioligands, which directly target cancer cells using targeted internal radiotherapy, along with cell therapies, including immunotherapy. FLASH radiotherapy, a revolutionary technique offering faster and less toxic treatment, is currently undergoing clinical development at the site. At the same time, Gustave Roussy maintains its position as a world leader in the field of antibody-drug conjugates, targeted therapies that combine antibodies with cytotoxic agents.

5. Providing long-term support

to patients after treatment is an essential part of care. Gustave Roussy conducts pragmatic trials to assess the real impact of care on quality of life, and is rolling out the Resilience platform, a personalised post-cancer support programme. The Transition Days also provide a dedicated space to prepare for life after cancer, addressing medical, psychological and social aspects, with a view to supporting patients' reintegration and overall well-being.

INNOVATING

to improve care

The last few months have been marked by major innovations at Gustave Roussy. From contact radiation therapy to 3D printing in dentistry, new advances are improving patient care every day.

Gustave Roussy has acquired the ZAP-X, a state-of-the-art radiotherapy device for neuro-oncology. It enhances the radiosurgery platform. This gyroscopic radiotherapy technology enables non-invasive and pain-free treatment of brain tumours. As an alternative to surgery, stereotactic radiosurgery (SRS) allows for extremely precise treatments while maintaining healthy tissue and cognitive function in the best possible way. This is a major advance for patients with primary or metastatic brain tumours.



In the field of imaging, the arrival of a state-of-the-art 3-Tesla MRI also marks a significant advance. Designed for radiotherapy and brachytherapy, it allows examinations to be carried out in the same position as that adopted during treatment, thereby optimising therapeutic precision. It is also suitable for the management of children under general anaesthesia, and supports the development of personalised treatments, particularly in neurology.

Another striking innovation is the Veriton-CT 400 camera range, a state-of-the-art digital SPECT/CT system. Thanks to its 12 mobile detectors, it enables full-body 3D imaging with enhanced accuracy and reduced radiotracer doses. It improves therapeutic protocols with Lutetium-177 and facilitates paediatric management thanks to faster and less invasive examinations.



Finally, the Dentistry and maxillofacial prosthetics unit has introduced a complete workflow for scanning, design and 3D printing. This technology enables the creation of digital patient duplicates, facilitating the manufacture of surgical guides, anatomical models and custom-made dental prostheses. Used in particular in the treatment of ENT cancers, it improves the accuracy of post-surgical dental restorations, reduces treatment times and helps to improve quality of life.

RESEARCH

with a societal impact



Gustave Roussy sets new milestones every year. Through transformative projects, cutting-edge technologies and an integrated approach to care, the Institute is reaffirming its ambition: to turn every scientific breakthrough into a clinical reality, working closely with patients.

Our key figures

RESEARCH

- 1,400 researchers and research staff
- 1,390 scientific publications per year
- 389 international publications in journals with an *Impact Factor* greater than 10 by 2025 (excluding conference proceedings)
- 42 exploratory and translational research teams
- 11 technology platforms
- 5 Research-Hospital-University (RHU) projects
- 3 national cohorts (Canto, E3N, Cobalance)
- Artificial Intelligence: a database of 400,000 patients and 1 dedicated research unit
- 8 prestigious European ERC grants

CLINICAL RESEARCH

- 13 clinical committees + 1 clinical research department
- 1 Department of Therapeutic Innovation and Early Trials (Ditep)
- 1 new clinical research platform
- 171 scientific publications in journals with an *Impact Factor* > 30
- 7,505 patients enrolled in clinical trials (40% of patients) – **the leading centre in France and Europe in terms of the number of patients enrolled in clinical trials**
- 618 active clinical trials
- Over 900 early trials

An international scientific reputation:

Gustave Roussy is France's leading institution for scientific publications in oncology, boasting the highest concentration of the world's most cited researchers (23 over the past ten years) and treating the largest number of patients, particularly in the context of clinical trials.

ACCELERATING RESEARCH, STANDING FOR EXCELLENCE

In 2025, the Gustave Roussy Foundation continued its scientific research programmes launched in 2024.

CHAIRS OF EXCELLENCE: INNOVATE TO HEAL

The Chairs of Excellence programme aims to attract the best talent in oncology. Funded by the generosity of our donors, it supports researchers selected by a panel comprising independent experts, based on a single criterion: scientific excellence.

To build on the momentum generated in 2024 with the creation of the first three chairs in immuno-oncology, a panel of experts selected two new chairs of excellence in oncology and data science in October 2025. The aim is to model how tumours develop and how they interact with the immune system, so as to predict how they will respond to treatment, limit their resistance and improve the chances of recovery.



Dr LISE MANGIANTE

specialist in
computational oncology,
oncogenomics and
tumour evolution



Dr ELSA BERNARD

specialist in
computational oncology
and its applications in
personalised medicine

MEDICAL AND SCIENTIFIC PROGRAMMES: EXPLORING NEW APPLICATIONS IN CANCER RESEARCH



In February 2025, Gustave Roussy and its Foundation launched a call for proposals for five-year medical and scientific programmes. These ambitious, high-impact programmes aim to accelerate the transfer of knowledge from research to innovation for the direct benefit of patients, while generating significant scientific advances. The two winning projects, selected from 25 submissions, are co-funded by the Institute and the Foundation. The project led by Camille Bigenwald, Cristina Castilla-Llorente, Laurie Menger and Aurélien Sutra Del Galy aims to develop academic CAR-T cell immunotherapy treatments. The project led by Alice Boilève and Sophie de Carné focuses on the characterisation and treatment of early-stage pancreatic cancer.



“Three initial chairs were created in the field of onco-immunology, with the aim of accelerating the development of new treatments that could transform patient care over the next five to ten years. They are led by Alexandre Detappe (Specialist in Nanotechnologies Applied to Immunotherapy), Éric Vivier (Global Expert in NK Cell Immunology) and Florent Ginhoux (Global Expert in Myeloid Cells of the Immune System).”

Anne Paoletti,
Director of the Gustave Roussy Foundation



Paediatric oncology research: exploring new treatment options

Paediatric oncology research was also strongly supported by the Foundation in 2025 with the launch of two new paediatric oncology medical-scientific programmes.

The first programme, led by Prof. Florent Ginhoux and Dr. Claudia Pasqualini, develops new models of child tumours in order to understand the dissemination of tumour cells and resistance to immunotherapies. The one led by Drs Léa Guérrini-Rousseau, Brice Fresneau and Jacques Grill focuses on the risk of secondary cancer in children following their recovery. In 2025, the Foundation also continued to fund the Phase 3 Biomed 2.0 clinical trial for a new treatment for diffuse intrinsic pontine glioma (DIPG).

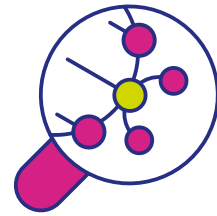
GUSTAVE ROUSSY PRIZE

Launched in 2025, the Gustave Roussy Prize is an annual award presented to a leading figure in the field of oncology research worldwide, whose scientific discoveries in the areas of cancer diagnosis, treatment or prevention have significantly improved patient care or led to a better understanding of the disease, in keeping with the values of Gustave Roussy.



Prof. Luis Diaz jr,
winner of the 2026
Gustave Roussy Prize

The prize, worth €200,000, is awarded by the Gustave Roussy Foundation and is supported Laboratoires Pierre Fabre as a founding sponsor. Open to all researchers, regardless of their nationality, it is awarded by an independent international panel, which selects the winner on the basis of criteria of excellence.



12 PRIORITY RESEARCH AREAS

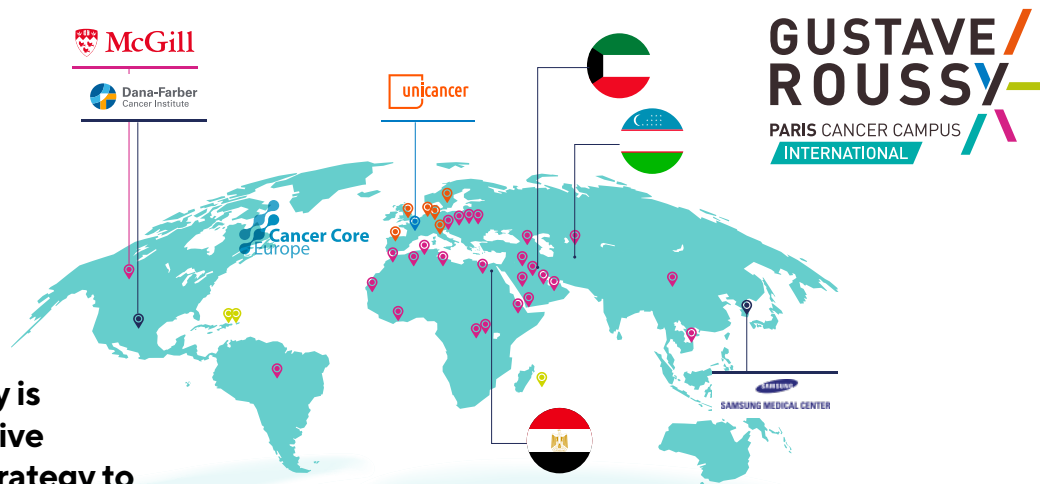
- DNA REPAIR & GENOME STABILITY
- PAEDIATRIC CANCERS
- DATA SCIENCE AND ARTIFICIAL INTELLIGENCE
- INNOVATIVE THERAPIES
- RADIOTHERAPY
- METABOLISM AND CANCER
- HAEMATOLOGY
- IMMUNO-ONCOLOGY
- MICROBIOTA AND CANCER
- PERSONALISED MEDICINE
- CANCER EPIDEMIOLOGY
- TUMOUR CELL DYNAMICS

An environment that fosters excellence in research

- 1 technology equipment program
- 5 chairs of excellence
- 5 emerging programmes
- 6 support for young teams
- 4 pragmatic trials
- 4 medical and scientific programmes
- A hundred supported projects
- €13.7 million in research grants in 2025 (including €12.8 million in donations allocated by the donor)

PRESENCE OVERSEAS

and many international partnerships



Gustave Roussy is pursuing an active international strategy to promote its healthcare model, which is centred on excellence, innovation and access for all. By building on its partnerships with institutions and hospitals, the Institute is extending its mission of patient care, training and knowledge transfer far beyond its borders.

Supported by its subsidiary Gustave Roussy International, this policy translates into:

- one-off or multi-year hospital projects (support, audit, co-development) in several partner countries
- cooperation agreements to structure networks of partner centres or satellites
- training and skills development programmes for healthcare professionals internationally.

Gustave Roussy Alumni: a committed community

GUSTAVE ROUSSY ALUMNI

Gustave Roussy brings together an international alumni community of former trainees, interns, researchers and professionals trained at the Institute. These alumni and professionals, in turn, become ambassadors for excellence in oncology, both in France and abroad.

- 1st network of oncology alumni in France
- More than 2,000 members, former doctors and researchers of Gustave Roussy
- 25 nationalities represented

Sharing Gustave Roussy's expertise in Overseas Territories

Since 2019, Gustave Roussy has been organising multidisciplinary consultation meetings specifically for patients from overseas territories, in close collaboration with hospitals and clinics in the relevant regions.

In 2025, more than 2,000 overseas patient cases were discussed, demonstrating the strength and sustainability of this partnership.

These regular remote multidisciplinary consultation meetings involve in particular:

- the French Polynesia Hospital in Papeete,
- the university hospitals in Martinique, Guadeloupe and Réunion.

This structure enables the provision of specialist expertise, reduces the number of medical evacuations to mainland France and thus shortens the time taken to provide care.

Patients therefore benefit from faster access to an accurate diagnosis and appropriate treatment, either locally or at a specialist centre in mainland France.

DEVELOPING EXCELLENCE

in oncology

In partnership with Paris-Saclay University, Gustave Roussy Education is the Institute's dedicated unit for initial, continuing and international training. It embodies Gustave Roussy's desire to pass on its expertise in oncology to all generations of healthcare professionals, both in France and abroad.



Through an innovative educational programme combining face-to-face teaching, distance learning and simulation, Gustave Roussy Education supports healthcare professionals, researchers, trainees and students in acquiring high-level skills that are closely aligned with the latest scientific and clinical advances.

The figures for 2025

TRAINING PROGRAMME

- 24 university degrees
- 18 master classes

NUMBER OF STUDENTS

- More than 11,700 participants registered on the digital education platform
- More than 6,200 students trained
- 2,600 newly enrolled students on the digital education platform
- 1,500 seminar participants, of which 30% international
- 730 enrolled in university degrees
- 223 PhD students enrolled in the doctoral school
- 110 engineering students specialising in healthcare professions at IFSBM
- 30 students enrolled on the Master's 2 programme in oncology

NUMBER OF LECTURERS

- 41 academics
- 700 lecturers, including 300 from Gustave Roussy

ENHANCING medical innovation

At the crossroads of research, clinical practice and entrepreneurship, Gustave Roussy Transfert embodies the vision of Gustave Roussy: to bring about the therapeutic innovations of tomorrow, in the service of ever more personalised and effective medicine.

From providing support for intellectual property protection to setting up start-ups, as well as negotiating partnerships and commercialising clinical data, Gustave Roussy Transfert plays a strategic role in promoting the Institute's scientific excellence both in France and internationally.

Working in close collaboration with the Paris-Saclay Cancer Cluster, this organisation plays an active role in shaping a unique ecosystem capable of fostering and nurturing the most innovative projects in oncology.

Our key figures



**110
PATENT
FAMILIES**

70 OF WHICH
MANAGED DIRECTLY
BY GUSTAVE ROUSSY

**7 LICENSED
PATENT FAMILIES
(I.E. 60% OF THE TOTAL)**

**94
TRANSLATIONAL
COLLABORATION
CONTRACTS**

SIGNED, 61 OF WHICH WITH
EXTERNAL FUNDING

**23 COMPANIES CREATED
OF WHICH 10 NEW
SINCE 2021
OF WHICH 3 NEW IN 2025**

**1 OFFICE
IN BOSTON**

2 NEW PROJECTS

FINANCIALLY SUPPORTED IN PARTNERSHIP WITH
SOFINNOVA PARTNERS



CURING 80% OF CANCERS, thanks to you

Our ambition is immense: to cure the majority of cancers in adults and children within the next fifteen years. Join our circle of major donors and give us your wholehearted support. You will help cure 15% more cancers within fifteen years, bringing the cancer cure rate to 80%!

Improving prevention will enable cancer to be detected at an earlier stage, and pioneering research will pave the way for a cure for the 20% of cancers that are still incurable. It is therefore with the aim of offering a future to 100% of patients that several ambitious projects are being implemented at Gustave Roussy.



The construction by 2028 of a new 33,000 m² Gustave Roussy research centre, at a cost of €190 million – a third of which is funded by philanthropic donations – will enable us to double the number of research teams and provide them with a 3.0 environment for agile and collaborative research of the highest standard.

Finally, in 2027, a new extension to Gustave Roussy dedicated to education and support functions will be built alongside the A6 motorway.

Finally, in 2029, opposite the new Villejuif – Gustave Roussy metro station, which opened in January 2025, a new building will be erected to house Gustave Roussy's cancer screening and rapid diagnosis services.

Building Europe's largest cancer campus

Gustave Roussy's scientific vision involves scaling up operations to attract these new talents and surround ourselves with the best expertise, in order to accelerate progress in the fight against cancer for the benefit of patients.

Europe's largest cancer research campus is being built in and around Gustave Roussy.

The Paris-Saclay Cancer Cluster (PSCC) co-founded by Gustave Roussy, whose aim is to accelerate the development of new cancer treatments, medical devices and diagnostic solutions in France, is already established on the campus. Biotechnology companies are setting up in the new buildings constructed near the Institute.





Double our research force by attracting internationally renowned researchers

There were 30 research teams at Gustave Roussy in 2020; twelve young researchers of international standing have already been recruited between 2021 and 2024, suggesting that the target of 30 new recruits over 10 years is realistic. This represents between 1,200 and 1,400 people dedicated to research at Gustave Roussy, including 200 to 300 independent researchers and clinician-researchers of international standing.

Taking treatment to the next level with new technologies and artificial intelligence

AI TOOLS

Professionals at Gustave Roussy are involved in international collaborations and initiatives, such as the partnership with Owkin, a French healthcare AI unicorn, to develop AI tools for digital pathology, showcasing their expertise in integrating advanced technologies into medical practice (*French Healthcare*).



AVATARS AND ORGANOIDS

Avatars and organoids represent a transformative approach to oncology, enabling personalised and precise treatment strategies. By faithfully replicating a patient's tumour biology, these models are powerful tools for understanding cancer and developing effective treatments.

INNOVATIVE MEDICINES AND DEVICES

The combination of state-of-the-art facilities, interdisciplinary collaboration, a commitment to personalised, patient-centred care, robust clinical trial programmes and strong industrial partnerships positions Gustave Roussy as a leading player in the development of new medicines and medical devices in the field of oncology.

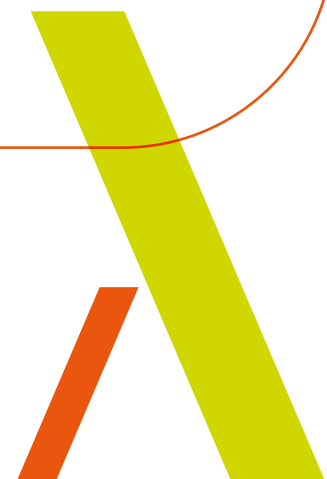
DIGITAL APPLICATIONS THAT INTEGRATE PATIENT COMMENTS

Gustave Roussy's research strategy involves incorporating patients' experiences and outcomes through digital monitoring solutions such as Resilience, which was co-developed by Gustave Roussy. By incorporating these monitoring elements into its research strategy, Gustave Roussy is challenging traditional paradigms in oncology, accelerating the discovery of innovative treatments that are informed by patients' experiences.



"Gustave Roussy's aim is to host 45 research teams by 2026 and 60 by 2030, including both experimental and theoretical teams. Recruitment focuses on highly promising young scientists or clinician-researchers who are able to lead a new research team. The number one challenge for a research centre is therefore to attract new talent capable of making high-impact discoveries. Our recruitment target is to bring on board 25 world-leading experts in their respective fields by 2030."

Prof. Fabrice André,
Head of Research at
Gustave Roussy



Curing all cancers in the 21st century? What if you were part of this revolution?



As leaders in our respective fields, we have a duty to support Europe's leading cancer research centre. Gustave Roussy builds on major breakthroughs, close collaboration, world-class talent and a scientific vision capable of transforming the lives of millions of patients. All they need is the means to achieve it!

By pooling our strengths and networks, and drawing on the best expertise and a strong philanthropic drive, we will succeed in curing all cancers in the 21st century!

Sébastien Bazin,
ACCOR Group CEO
and President of the Gustave Roussy Foundation

YOUR DEDICATED CONTACTS

PERRINE DE LONGEVIALLE

Brand and Philanthropy Director
perrine.de-longevialle@gustaveroussy.fr

GAËLLE LE ROUX

Resource Development Manager
gaelle.le-roux@gustaveroussy.fr

ANNE-SOPHIE DE BOISSARD

Sponsorship, Partnerships & Major Donors Division Manager - International Collection
anne-sophie.de-boissard@gustaveroussy.fr

Giving with confidence



Financial transparency, sound management of donations and respect for donors' wishes are among the core objectives of Gustave Roussy's fundraising and bequests programme. Donations to Gustave Roussy and its Foundation go directly towards funding innovation in research and care. Gustave Roussy and its Foundation have held the 'Don en Confiance' accreditation since 2009. Don en Confiance is a certification and control body for associations and foundations that call on the generosity of the public.

The 'Don en Confiance' accreditation certifies the transparency of fundraising procedures and the sound management of donations received. **This accreditation also recognises the exemplary rigour with which Gustave Roussy and its Foundation raise funds: fundraising and operating costs (including HR costs) account for just 14% of the private funds raised, making it one of the lowest ratios in the cancer charity sector.**

GUSTAVE ROUSSY
PARIS CANCER CAMPUS

FOLLOW US
ON SOCIAL
MEDIA

